

**INTERNATIONAL INDIAN SCHOOL DAMMAM**  
**EVS WORKSHEET CLASS IV**  
**ANNUAL TERM (2017-18)**  
**LESSON – 4 SENSE ORGAN**

**I. Answer the following question.**

1. What are the most sensitive parts of our body?

---

2. Define Braille system .

---

**II. GIVE REASON**

1. As we grow older our tastes become less strong because \_\_\_\_\_

---

**III. Match the body part with the sense and then find the words in the grid below & write its functions.**

Finger	Music
Ears	Rainbow
Eyes	Perfume
Tongue	Soft
Nose	Delicious

S	O	F	T	L	I	X	P
M	A	F	I	N	D	E	E
M	U	S	I	C	E	N	R
E	F	E	S	V	L	T	F
B	U	I	H	Q	I	T	U
H	M	X	E	X	C	I	M
E	E	S	A	E	I	Z	E
R	A	I	N	B	O	W	U
M	H	W	L	R	U	H	E
Y	Z	Q	G	Q	S	F	V

1. \_\_\_\_\_

2. \_\_\_\_\_

3. \_\_\_\_\_

4. \_\_\_\_\_

5. \_\_\_\_\_

## Lesson 7-Water sources

### I. FILL IN THE BLANKS

- \_\_\_\_\_ is the ultimate source of water.
- Underground water is brought out for use by \_\_\_\_\_, \_\_\_\_\_ and \_\_\_\_\_.
- \_\_\_\_\_ are bigger collections of water than pond.
- \_\_\_\_\_ on melting turns into water.
- A tube well uses \_\_\_\_\_ to draw out underground water .
- \_\_\_\_\_ dry up because of evaporation of water by the heat of the sun.

### II. EXPLAIN THE FOLLOWING:

1. Snow \_\_\_\_\_  
\_\_\_\_\_

2. Water fall \_\_\_\_\_  
\_\_\_\_\_

3. How do we get salt from sea water?  
\_\_\_\_\_  
\_\_\_\_\_

4. Why we cannot drink sea water?  
\_\_\_\_\_  
\_\_\_\_\_

## LESSON – 8 HOW WATER GETS DIRTY ?

### I. FILL IN THE BLANKS:

- The disease diarrhoea is spread through \_\_\_\_\_.
- We should always drink \_\_\_\_\_ water.
- Squid and Cuttle fishes are found in \_\_\_\_\_.
- \_\_\_\_\_ is the longest river of India.
- \_\_\_\_\_ was the cradle of India's Indus Valley Civilisation.
- \_\_\_\_\_, \_\_\_\_\_ and \_\_\_\_\_ are the ingredients needed for the preparation of ORS.
- The rivers \_\_\_\_\_ and \_\_\_\_\_ form the world's biggest delta at Sunderbans in West Bangal.
- The main sources of water in villages are \_\_\_\_\_, \_\_\_\_\_ and \_\_\_\_\_.
- Brahmaputra river enters india from \_\_\_\_\_.
- \_\_\_\_\_ is the source of longest river in India.
- \_\_\_\_\_ is called the Ganga of the south.

**II. IDENTIFY AND ENCIRCLE THE WATER BORNE DISEASES:**

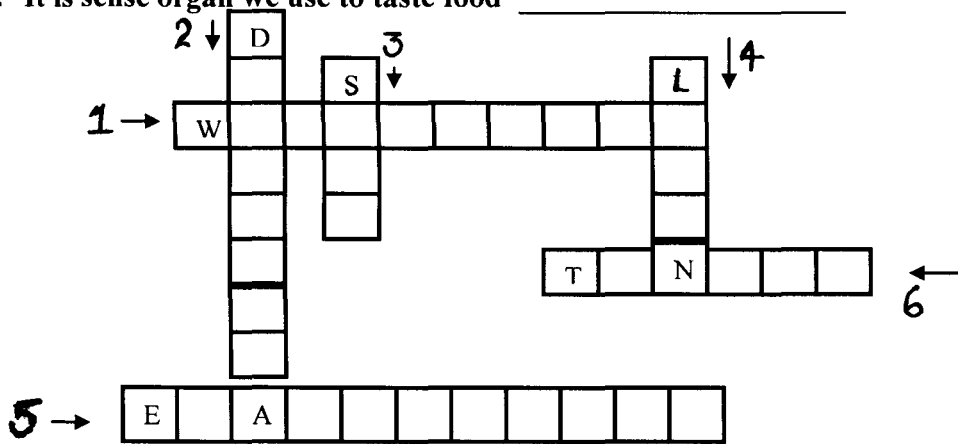
Malaria, dysentery , Cough and cold, Cholera, Jaundice , Throat infection

**III. DEFINE THE FOLLOWING**

- a) ORS \_\_\_\_\_  
\_\_\_\_\_  
\_\_\_\_\_
- b) Water pollution \_\_\_\_\_  
\_\_\_\_\_  
\_\_\_\_\_

**Q IV. SOLVE THE CROSSWORD PUZZLE WITH THE HELP OF CLUES GIVEN BELOW**

1. It is taken place in nature all the time \_\_\_\_\_
2. It is disease caused by water pollution \_\_\_\_\_
3. Most of the rivers fall into \_\_\_\_\_
4. It can be used while preparing ORS \_\_\_\_\_
5. It is process in which water changes into water vapour \_\_\_\_\_
6. It is sense organ we use to taste food \_\_\_\_\_



**L-18 GARBAGE**

**I. FILL IN THE BLANKS:**

1. Waste should be disposed of properly without harming the \_\_\_\_\_.
2. \_\_\_\_\_ is the process of natural decomposition of organic waste .
3. Paper is made from \_\_\_\_\_.
4. One of the most useful solution to our waste problem is \_\_\_\_\_.

**II. CROSS THE ODD ONE OUT:**

- |           |          |         |        |
|-----------|----------|---------|--------|
| 1. Paper  | chemical | plastic | metal  |
| 2. Refuse | reuse    | recycle | reject |

**III. WRITE TRUE OR FALSE AND CORRECT THE FALSE STATEMENT:**

1. In urban areas, the waste is biodegradable. \_\_\_\_\_

2. Leaves, peels, garden litter etc are organic waste. \_\_\_\_\_

3. Toxic waste should be handed over to kabadiwallahs. \_\_\_\_\_

**IV .GIVE REASON:**

1. Why should we adopt a zero waste frame of mind at school and home ?

\_\_\_\_\_

\_\_\_\_\_

2. Why should we dispose waste in a scientific manner?

\_\_\_\_\_

\_\_\_\_\_

**L-15 WHERE DO ANIMALS LIVE ?**

**I NAME THE FOLLOWING:**

1. The natural environment of a living thing \_ \_\_\_\_\_

2. The animals that sleep in the day time and hunt at night, \_\_\_\_\_

3. Name two animals that do not make homes. \_\_\_\_\_ , \_\_\_\_\_

4. Name two animals that move in groups . \_\_\_\_\_ , \_\_\_\_\_

5. Two animals with short ears. \_\_\_\_\_ \_\_\_\_\_

**II. CROSS THE ODD ONE OUT :**

1. Cat frog dog lion

2. Grass stick mud web

**III. WRITE TRUE OR FALSE AND CORRECT THE FALSE STATEMENT**

1. Gorillas live in bands that are led by a female . \_\_\_\_\_

2. Rabbits and moles live in holes dug by other animals . \_\_\_\_\_

3. A lizard has ears. \_\_\_\_\_

**L-20 : Public Property and Community Services**

**I. FILL IN THE BLANKS:**

- 1) \_\_\_\_\_ belongs to all of us and must be taken care of by all of us.
- 2) Old-age homes are set up by \_\_\_\_\_.
- 3) \_\_\_\_\_ are a part of our heritage.
- 4) We should not \_\_\_\_\_ public property.
- 5) Non-Governmental Organizations work for the benefit of the \_\_\_\_\_.
- 6) A \_\_\_\_\_ keeps a record of births and deaths.
- 7) The members who are elected in the Corporation are called \_\_\_\_\_.
- 8) \_\_\_\_\_ is the Chairperson of the Municipal Corporation.
- 9) A \_\_\_\_\_ is an elected body whose members are elected by the residents of the city.
- 10) A Panchayat settles disputes among the \_\_\_\_\_.
- 11) A Panchayat supplies \_\_\_\_\_ and \_\_\_\_\_ to the farmers.
- 12) Every village has a \_\_\_\_\_.
- 13) \_\_\_\_\_ is the head of the Panchayat.
- 14) A \_\_\_\_\_ has 7 to 15 members with one-third representation of women.
- 15) The agency that governs a big city is called \_\_\_\_\_.
- 16) India is a land of \_\_\_\_\_.
- 17) \_\_\_\_\_ provide services to the people.
- 18) The money needed to maintain public property comes from the \_\_\_\_\_ we pay.
- 19) The \_\_\_\_\_ looks after the public property.
- 20) \_\_\_\_\_ is the property which is used by all of us.

**II. NAME THE FOLLOWING:**

1) Some agencies involved in community services. \_\_\_\_\_

---

2) Agency which provides adult education. \_\_\_\_\_

**III. MATCH THE FOLLOWING:**

- |   |        |                       |
|---|--------|-----------------------|
| 1. Community centers are set up by                | (    ) | NGO                   |
| 2. Elected members                                | (    ) | Municipal Corporation |
| 3. Poor and orphaned children are looked after by | (    ) | Panchayats            |
| 4. Digging of wells                               | (    ) | Corporates            |

**IV. WRITE TRUE OR FALSE:**

- 1) Panchayat settles disputes among villages. ( )
- 2) Non-governmental organization sets up municipal corporation. ( )
- 3) The head of the chairperson of municipal corporation is called Mayor.( )
- 4) Public property is useful for rich people. ( )
- 5) Municipal Corporation sets up dispensaries and hospitals. ( )

**L-21 :Pollution**

**I. FILL IN THE BLANKS:**

- 1) Smoke released from \_\_\_\_\_, \_\_\_\_\_ and \_\_\_\_\_ is the main cause of air pollution.
- 2) Factories also release harmful \_\_\_\_\_ and pollute water.
- 3) Smoke and exhaust fumes from the vehicles contain harmful gases such as \_\_\_\_\_ and \_\_\_\_\_.
- 4) Trees are called as the \_\_\_\_\_ of the earth.
- 5) The modern chipko movement was started in \_\_\_\_\_ in 1973.
- 6) The chipko movement was started about \_\_\_\_\_ years ago in a small village of \_\_\_\_\_.
- 7) Plants absorbs sounds and help to reduce \_\_\_\_\_.
- 8) Animals living in water are killed due to \_\_\_\_\_ rain.
- 9) Water from the factories should be treated before it mixes with \_\_\_\_\_ bodies.
- 10) \_\_\_\_\_ release smoke through chimneys.
- 11) \_\_\_\_\_ damages buildings and forests.
- 12) Loud speakers and blaring horns cause \_\_\_\_\_.
- 13) \_\_\_\_\_ are the substance or gases that cause pollution.
- 14) When \_\_\_\_\_ and \_\_\_\_\_ mix with water vapour in the air, they form acid .
- 15) Smoke from the factories is harmful for living beings , because it causes \_\_\_\_\_ problems and \_\_\_\_\_.
- 16) \_\_\_\_\_ and \_\_\_\_\_ carry away the top layer of the soil.
- 17) \_\_\_\_\_ are used in the fields make the soil unfit for use.

**II. MATCH THE FOLLOWING:**

- |                         |     |                    |
|-------------------------|-----|--------------------|
| 1. Trees                | ( ) | acid rain          |
| 2. Air pollution        | ( ) | soil unfit for use |
| 3. Chemical fertilizers | ( ) | noise pollution    |
| 4. Chipko movement      | ( ) | lungs of the earth |
| 5. Loud speakers        | ( ) | save forests       |

**III. SAY TRUE OR FALSE. CORRECT THE FALSE STATEMENT:**

- 1) Plants absorb sound and help to reduce noise pollution: \_\_\_\_\_  
\_\_\_\_\_
- 2) Water is the lungs of the earth: \_\_\_\_\_  
\_\_\_\_\_
- 3) Chipko movement is to control the pollution: \_\_\_\_\_  
\_\_\_\_\_
- 4) Acid rain kills animals living in water: \_\_\_\_\_  
\_\_\_\_\_
- 5) Constantly hearing to loud music will cause breathing problem: \_\_\_\_\_  
\_\_\_\_\_

**L-22 : Solar System**

**I. DEFINE THE FOLLOWING:**

- 1) Stars \_\_\_\_\_  
\_\_\_\_\_
- 2) Solar system \_\_\_\_\_  
\_\_\_\_\_
- 3) Equator \_\_\_\_\_  
\_\_\_\_\_
- 4) Planets \_\_\_\_\_  
\_\_\_\_\_

**II. FILL IN THE BLANKS:**

1. The Earth is a \_\_\_\_\_ in the solar system.
2. The smallest planet is \_\_\_\_\_ and biggest planet is \_\_\_\_\_.
3. \_\_\_\_\_ is the fixed path around the planet.
4. The Sun along with its 8 planets is called \_\_\_\_\_.
5. The orbit is \_\_\_\_\_ in shape.
6. The orbit of each planet is \_\_\_\_\_ and hence it does not collide with other.

7. \_\_\_\_\_ are the heavenly bodies that revolve round some planets.
8. Moons are also called as \_\_\_\_\_.
9. \_\_\_\_\_ and \_\_\_\_\_ do not have light of their own.
10. The moon shines because it reflects the light of the \_\_\_\_\_.
11. The Earth's moon completes one revolution around the earth in \_\_\_\_\_.
12. \_\_\_\_\_ is disqualified as a planet.
13. Satellites help in \_\_\_\_\_ and \_\_\_\_\_ as they orbit round the \_\_\_\_\_.
14. Stars burn to produce their own \_\_\_\_\_ and \_\_\_\_\_.
15. \_\_\_\_\_ is a thin layer of solid rocks.
16. The layer of earth made up of hot rocks is called as \_\_\_\_\_.
17. The inner most part of the earth is \_\_\_\_\_.
18. Earth spins like a top from \_\_\_\_\_ to \_\_\_\_\_ and this movement is called \_\_\_\_\_.
19. The \_\_\_\_\_ of the earth is tilted.
20. The movement of the Earth around the Sun in its orbit is called \_\_\_\_\_.
21. The Earth completes one revolution in \_\_\_\_\_.
22. The \_\_\_\_\_ are the two ends of Earth.
23. In \_\_\_\_\_, days are long and in \_\_\_\_\_, nights are long.
24. Days and nights are \_\_\_\_\_ at the equator.
25. The imaginary line in the northern hemisphere is called \_\_\_\_\_ in the southern hemisphere is \_\_\_\_\_.

### III. NAME THE FOLLOWING

1. Planet closest to the Sun. \_\_\_\_\_
2. Planet farthest to the Sun \_\_\_\_\_
3. First satellite launcher in space by Russia. \_\_\_\_\_
4. First satellite launched by India \_\_\_\_\_
5. A huge ball of hot gases. \_\_\_\_\_
6. Scientist who study stars with the help of telescopes. \_\_\_\_\_
7. Planets that do not have moon. \_\_\_\_\_
8. Imaginary line that passes through the middle of the Earth \_\_\_\_\_
9. The three main layers of the Earth. \_\_\_\_\_

### IV. PRACTICE THE DRAWING AND LABELLING OF:

- 1). Internal structure of the Earth.
- 2). Imaginary lines of the Earth.

**NOTE : LEARN THE QUESTION ANSWERS GIVEN IN THE NOTEBOOK AND READ THE TEXTBOOK THOROUGHLY:**