

**INTERNATIONAL INDIAN SCHOOL DAMMAM  
SECOND TERMINAL EXAMINATION 2017-2018**

CLASS : **VIII**  
SUBJECT : **GENERAL SCIENCE**

Max.Marks: **80**  
Duration : **3Hours**

**SET -B**

General Instructions:-

1. *Read the questions carefully.*
2. *All the answers to be written in the answer sheet provided.*
3. *Total number of questions is 42.*

**SECTION – A**

**D) Choose the correct answer from the following options** (1 x 10 = 10Marks)

1. The number of chromosomes present in a gamete is  
a) 46            b) 23 pairs    c) 23            d) 46 pairs
2. Which of the following is an oviparous animal?  
a) hen            b) cow            c) human        d) cat
3. Which of the following is known as artificial silk?  
a) Teflon        b) rayon        c) acrylic        d) melamine
4. Solution of which of the following in water will change the colour of red litmus to blue?  
a) magnesium oxide    b) sulphur dioxide    c) carbon dioxide    d) both a and c
5. Which of the following musical instrument is different from others?  
a) flute            b) violin        c) whistle        d) saxophone
6. To which terminal of the battery the shorter lead of LED is connected  
a) negative    b) positive    c) either negative or positive    d) none of these
7. A compass needle gets deflected when kept near a current carrying wire. which of the following effects of electric current causes this?  
a) chemical effect    b) heating effect    c) magnetic effect    d) all of these
8. The gas which is not a pollutant unless present in excess.  
a) carbon dioxide    b) carbon monoxide    c) nitrogen        d) oxygen
9. The gland which transports secretions through ducts.  
a) pituitary            b) sebaceous        c) ovary            d) thyroid
10. Insufficient production of this hormone in tadpoles leads to their incomplete development.  
a) insect hormone    b) thyroxine        c) growth hormone    d) all of these

**II) Fill in the blanks****(1 x 7 = 7 Marks)**

11. \_\_\_\_\_ produces female gamete in human.
12. AIDS is caused by a virus called \_\_\_\_\_.
13. The fibre which is used for making parachutes and ropes for rock climbing is \_\_\_\_\_.
14. Metals react with acids and produce \_\_\_\_\_ and \_\_\_\_\_ gas.
15. \_\_\_\_\_ is a reactive metal which is stored in kerosene.
16. \_\_\_\_\_ determines the shrillness of a sound.
17. To get a coating of silver on a copper spoon, you should connect the copper spoon to the \_\_\_\_\_ terminal of the battery.

**III) Name the following****(1 x 3 = 3Marks)**

18. The first fully synthetic plastic.
19. A metal that exists in liquid form.
20. Two Green house gases

**SECTION - B****IV) Answer the following in one or two sentences****(2 x 10 = 20 Marks)**

21. Define thermosetting plastics. Give two examples.
22. What is Ganga Action Plan?
23. Differentiate between audible and inaudible sounds.
24. Why is zinc deposited on iron in constructing bridges?
25. Represent the sex determination in humans in the form of a flowchart.
26. Which of the following is a good conductor of electricity?  
a) tap water   b) distilled water  
Give reason for your answer.
27. Define metamorphosis. Represent the life cycle of frog in the form of a flowchart.
28. Write a short note on Adam's apple.
29. What is displacement reaction? Give an example in the form of a chemical equation.
30. a) What do you mean by target site?  
b) Name the male and female sex hormones in humans.

**SECTION - C**

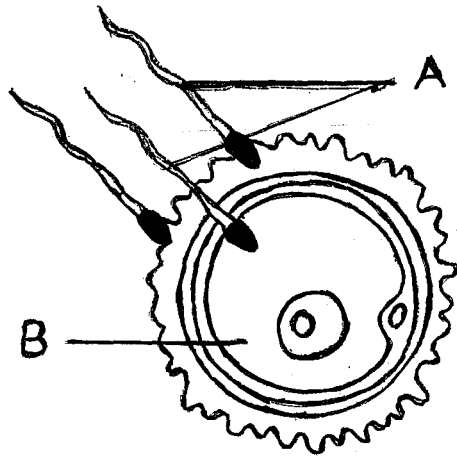
**V) Answer the following in three or four sentences**

(3 x 10 = 30 Marks)

31. What are LEDs? Mention any one use of them. What are the advantages of LEDs over ordinary electric bulbs?
32. Define ductility. Why are bells made of metals?
33. What is meant by “marble cancer”?
34. Using the clues given below identify the **hormones** and the **glands** which secrete them.
  - a) deficiency of this causes diabetes
  - b) it helps the body to adjust to stress
  - c) it is necessary for the normal growth of a person.
35. a) Define amplitude.  
b) What is noise? Write two harmful effects of noise pollution.

OR

35. a) Define vibration.  
b) A pendulum oscillates 30 times in 6 seconds. Find the frequency and time period of the pendulum.
36. List the changes that take place in the body at puberty (6 points)
37. Observe the figure given below and answer the questions that follow.



- a) Identify the process
  - b) Label A and B
  - c) What happens during this process and what is formed?
38. How is sound produced by human beings?
  39. a) Differentiate between internal and external fertilisation. Give two examples for each type.  
b) Define foetus.
  40. What makes copper turn green when kept exposed to moist air for long? Explain with chemical equation.

**SECTION - D**

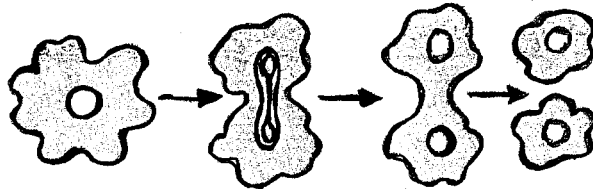
**VI) Answer the following in Detail**

(5 x 2 = 10 Marks)

41. a) Define cloning

b) Write the expansion of IVF. What are the babies born by this technique called?

c) Identify the diagram and explain the process.



42. a) What are chemical effects of electric current? Explain the resultant changes in a chemical reaction.

b) Draw a labelled diagram showing electrolysis of water

OR

42. a) What is electroplating?

b) Why is chromium electroplated on other objects?

c) Draw and label a simple circuit showing electroplating of copper.

ALL THE BEST