

**INTERNATIONAL INDIAN SCHOOL DAMMAM**

**ANNUAL EXAMINATION 2017 - 2018**

**CLASS : VII**  
**SUBJECT : GENERAL SCIENCE**

**MAX. MARKS : 80**  
**DURATION : 3 Hours**

**SET - A**

**GENERAL INSTRUCTIONS:**

- 1. Read the questions carefully.*
- 2. All answers to be written in the answer sheet provided.*
- 3. Total number of questions is 42.*

**SECTION – A**

**I. Choose the correct answer from the following questions (1 X 10 = 10 marks)**

- The fusion of male and female gamete results in a \_\_\_\_\_  
a) embryo                                      b) pollen  
c) egg    d) zygote
- The process of depositing a layer of \_\_\_\_\_ on iron is called galvanization.  
a) tin    b) zinc  
c) nickel    d) chromium
- \_\_\_\_\_ is a source of energy for human body.  
a) water    b) carbon dioxide  
c) glucose    d) oxygen
- Pick the odd one out from the following:  
a) electric toaster                                      b) electric iron  
c) electric heater                                      d) electric fan
- The distance travelled by a vehicle is measured by \_\_\_\_\_  
a) odometer    b) accelerometer  
c) speedometer    d) rotameter
- Who discovered circulation in man?  
a) William Aston                                      b) William Harvey  
c) William Lewis                                      d) William Robinson

7. When electric current is drawn from the cell, the circuit is said to be \_\_\_\_\_

- a) Open    b) closed  
c) incomplete                                    c) none of these

8. \_\_\_\_\_ produced in a fungus are asexual reproductive bodies.

- a) spores    b) seed  
c) zygote    d) embryo

9. A dark funnel shaped cloud that reaches from the sky to the ground is called

- a) tornado    b) cyclone  
c) typhoon    c) hurricane

10. Percentage of carbon dioxide in exhaled air is \_\_\_\_\_

- a) 4.04    b) 4.01  
c) 4.4    d) 4.14

**II. Fill in the blanks** (1 X 7 = 7 marks)

11. The image formed by a \_\_\_\_\_ mirror is always virtual and of the same size as that of the object.

12. Calamine solution contains \_\_\_\_\_ which neutralize the effect of acid.

13. The \_\_\_\_\_ and \_\_\_\_\_ regions experience severe climatic conditions.

14. Xylem and phloem are the parts of \_\_\_\_\_ tissue of a plant.

15. Air \_\_\_\_\_ on heating and \_\_\_\_\_ on cooling.

16. Light travels in a straight line. It is called \_\_\_\_\_ propagation of light.

17. Gills in fish are the projections of the \_\_\_\_\_.

**III. Name the following** (1 X 3 = 3 marks)

18. Small openings at the sides of the body of insects for the entry of air. \_\_\_\_\_

19. The time taken by the pendulum to complete one oscillation. \_\_\_\_\_

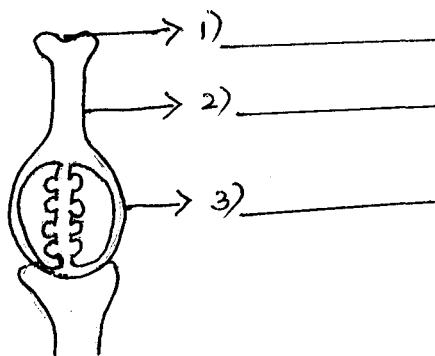
20. The two lower chambers of the heart. \_\_\_\_\_

**SECTION - B**

**IV. Answer the following in one or two sentences** (2 X 10 = 20 marks)

21. How is stainless steel made?  
22. Write the adaptations of polar bear.  
23. What are anaerobes? Why is yeast used in making beer and wine?

24. Differentiate between real and virtual image. (2 points)
25. a) Write the composition of urine.  
 b) In which organ is urine formed?
26. a) What are indicators? Name the indicator obtained from lichens.  
 b) What colour does phenolphthalein give in acidic and basic medium?
27. Name the elements that determine the weather at any place.
28. Define chemical reaction? Write the chemical equation for burning of magnesium.
29. a) Identify and name the part of the plant given below and label the parts.



Name: \_\_\_\_\_

30. Define cellular respiration. Write the word equation for aerobic respiration.

### SECTION – C

**V. Answer the following in three or four sentences (3 X 10 = 30marks)**

31. a) Define lateral inversion. (1)  
 b) Why are the letters of the word AMBULANCE written in reverse order on the vehicle? (2)
32. a) On what factors does the amount of heat produced in a wire depend? (1)  
 b) Define fuse. What should be the nature of the fuse wire? (2)
33. What are the benefits of seed dispersal? (3)
34. a) What causes wind blow? Explain. (2)  
 b) Name the instrument used to measure wind speed. (1)
35. a) Differentiate between inhalation and exhalation. (1)  
 b) Describe about the movement of diaphragm and ribcage during exhalation. (1)  
 c) Define breathing rate. (1)
36. a) What is neutralisation reaction? (2)  
 b) Write an example for neutralisation reaction. (1)

37. a) Define electromagnet. (1)  
 b) What is a battery? (1)  
 c) Draw the symbol of a switch in off position and a battery having 3 cells. (1)

**OR**

37. a) Explain the two possible reasons for excessive current in a circuit. (2)  
 b) What does MCB and CFL stand for? (1)  
 38. Why do we get relief from muscle cramps after a hot water bath or massage? (3)  
 39. a) Define speed. What is the basic unit of speed? (1)  
 b) The distance between Cochin and Goa is 780 Kms by bus. The total time taken to cover the distance by bus is 12 hrs. Calculate the speed of the bus. (2)  
 40. a) What is reproduction? Name any one type of asexual reproduction. (1)  
 b) Differentiate between self and cross pollination. (2)

**SECTION – D**

**VI. Answer the following in detail**

**(5 X 2 = 10 marks)**

41. a) Differentiate between concave and convex mirror with a neat labelled diagram. **(2 points)** (3)  
 b) Write any one use of concave and convex mirror. (1)  
 c) Define dispersion of light. (1)  
 42. a) Name the different components of blood. (2)  
 b) Write the functions of blood. **(3 points)** (1 ½)  
 c) Distinguish between arteries and veins. **(3points)** (1 ½)

**OR**

42. a) Sponges and hydra don't need a circulatory system. Why? (2)  
 b) What is transpiration? Write its significance. (2 points) (2)  
 c) Define dialysis. (1)

XX