

SUBJECT : GENERAL SCIENCE

CLASS : VII

SET - A

Time - 3 Hrs

Marks - 90

General instructions :

1. Read the questions carefully.
2. All the answers to be written on the answer sheet provided.
3. Total number of questions is 48.

SECTION - A

I. Choose the correct answer from the following options

1x 15 = 15M

- 1) The Organisms which does not need a circulatory system is -----  
a) Frog                      b) Hydra                      c) Sponges                      d) Both b & c
- 2) The colour less indicator used in labs is -----  
a) Litmus                      b) Phenolphthalein                      c) Turmeric                      d) China rose
- 3) The acid present in gastric juice is -----  
a) Citric acid                      b) Hydrochloric acid                      c) Sulphuric acid                      d) Nitric acid
- 4) The component not essential for photosynthesis is -----  
a) Hydrogen                      b) Carbon-di-oxide                      c) Water                      d) Sunlight
- 5) The Precipitate formed when lime water reacts with  $\text{CO}_2$  is -----  
a) Calcium oxide                      b) Calcium hydroxide                      c) Calcium carbonate                      d) Zinc carbonate
- 6) The excretory product of crow is -----  
a) Urea                      b) Ammonia                      c) Uric acid                      d) None
- 7) The element not present in the carbohydrate prepared by plant in photosynthesis is ---  
a) Hydrogen                      b) Carbon                      c) Oxygen                      d) potassium
- 8) Evaporation process is a ----- change.  
a) Chemical change                      b) Physical change                      c) Both a&b                      d) None
- 9) Aryan is suffering from cold so he takes fruits rich in Vitamin C. Name the acid present in the fruit.  
a) Oxalic acid                      b) Hydrochloric acid                      c) Ascorbic acid                      d) Lactic acid
- 10) The plant which is a partial parasite is -----  
a) Amarbel                      b) Rhizobium                      c) Lichen                      d) spirogyra

11) Anaerobic bacteria digest animal waste & produce biogas (change A). The biogas is then burnt as fuel (change B) which of the following statements pertain to these changes is correct

- a) Process A is a chemical change                      b) Process B is a chemical change  
c) Both process a&b are chemical changes            d) None of these is a chemical change

12) ORS is given for treating -----

- a) Malaria                      b) Diarrhoea                      c) Cold                      d) Flu

13) The acid not found in acid rain is -----

- a) Oxalic acid                      b) Sulphuric acid                      c) Carboic acid                      d) Nitric acid

14) Thin blood vessels which supplies blood to tissues is -----

- a) Capillaries                      b) Arteries                      c) Veins                      d) Pulmonary vein

15) The partially digested food in ruminants is called -----

- a) Cud                      b) Rumen                      c) Caecum                      d) Rumination

### SECTION -B

**II Name the following**

**1x2 = 2M**

16) The blood cell which helps in clotting of blood.

17) The base used to neutralise acidic soil.

**III Fill in the blanks**

**1x2 = 2M**

18) ----- are The finger like projection in small intestine which helps in absorption of digested food.

19) ----- + H<sub>2</sub>O ----> Mg(OH)<sub>2</sub>

**IV Rewrite the false statements correctly**

**1x2 =2M**

20) Pulmonary vein carries impure blood from lungs to the heart.

21) Autotrophs are the organisms that take nutrients in solution form from dead & decaying matter.

**V Match the following**

**1x4 = 4M**

- |                            |             |
|----------------------------|-------------|
| 22) Turmeric               | - Lichen    |
| 23) Food vacuole           | - Ozone     |
| 24) Protect from UV rays   | - Indicator |
| 25) Algal & fungal partner | - Amoeba    |

### SECTION - C

**VI Answer the following in One or two sentences**

**2x10 =20M**

26) What is Galvanisation? Give one use of it.

27) What is blood? What are the components of blood?

- 28) Explain how leaves other than green colour prepare their food.
- 29) Give reason why cellulose cannot be digested by humans but by ruminants only?
- 30) Define chemical reaction. Write any two changes associated with chemical reactions.
- 31) List down the different types of teeth and state their functions.
- 32) Define transpiration. Write its significance.
- 33) Name the bacterium that lives in the roots of legumes. State its importance.
- 34) Give reason why calamine lotion is applied for ant bite.
- 35) Mention the different types of heterotrophic nutrition in plants. Give example for each.

SECTION - D

VII Answer the following in 3 or 4 sentences

3x10 = 30M

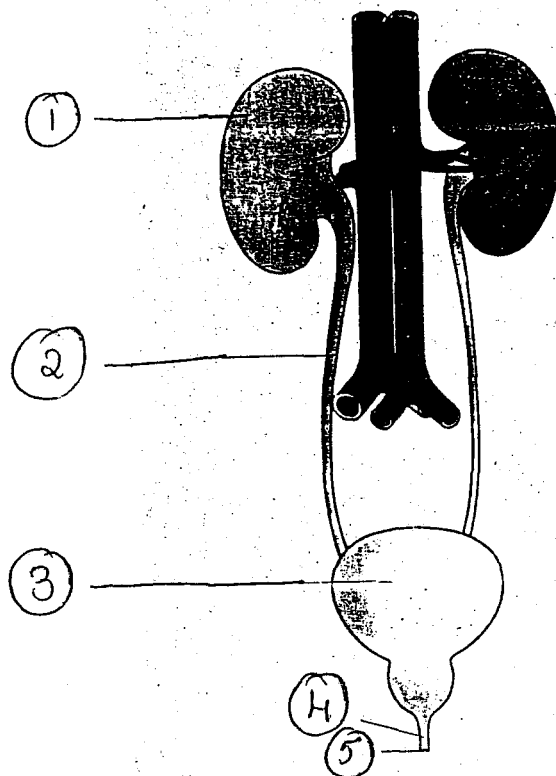
- 36) What is the effect of 3 natural indicators on the following  
a) Acetic acid      b) Calcium hydroxide      c) tap water
- 37) What is tissue? Name the vascular tissue present in plants .Write its functions.
- 38) What are physical properties? What is a physical change? Give an example.
- 39) Differentiate between autotrophs and heterotrophs.
- 40) What happens when Mg ribbon burns in air. What is the nature of product formed when it reacts with water. Represent it in the form of an equation.
- 41) What is tooth decay? How can it be prevented.

OR

Name the different process involved in the process of digestion of food. Name the end products of digestion.

- 42) What is Neutralisation? Give an example .Represent it in the form of an equation.
- 43) What is digestive system? Name the different parts of it.
- 44) Draw a neat labelled diagram of schematic representation of photosynthesis.

45) Identify the given diagram and label its parts.



SECTION - E

VIII Answer the following in Detail

5 x 3 = 15M

- 46) a) What is dialysis?  
b) Write any 2 differences between arteries & Veins  
c) List out the waste produced in our body and Name the organs involved in its removal.
- 47) a) Describe the method for preparation of china rose indicator.  
b) What are neutral solutions? Give an example.  
c) Name the bases present in soap.

OR

- a) Distinguish between acids and bases  
b) Explain why an antacid is used during indigestion.
- 48) a) What are villi? Write its significance.  
b) Explain the process of digestion in Amoeba.

INTERNATIONAL INDIAN SCHOOL - DAMMAM

SUMMATIVE ASSESSMENT - I SETEMBER - 2012 - 13

SUBJECT : GENERAL SCIENCE

CLASS : VII

SET - B

Time - 3 Hrs

Marks - 90

General instructions :

4. Read the questions carefully.
5. All the answers to be written on the answer sheet provided.
6. Total number of questions is 48.

SECTION - A

I. Choose the correct answer from the following options 1x 15 = 15M

- 1) The Excretory product of snake is -----  
a) Urea                      b) Uric acid                      c) Ammonia                      d) None
- 2) The saliva converts starch into -----  
a) Amino acid                      b) Sugar                      c) Fatty acid                      d) Glycerol
- 3) The colourless indicator used in labs is -----  
a) Litmus                      b) Phenolphthalein                      c) Turmeric                      d) China rose
- 4) Explosion of fire work is not associated with  
a) Sound                      b) new substance                      c) Smell                      d) Reversible change
- 5) ----- allows the blood to follow in only one direction  
a) Capillaries                      b) Valves                      c) Veins                      d) Arteries
- 6) Cellulose is digested in the ----- in ruminants.  
a) Rumen                      b) Caecum                      c) Cud                      d) Rumination
- 7) Rohit takes curds in his diet every day, so which acid does he consume in it  
a) Oxalic acid                      b) Citric acid                      c) Lactic acid                      d) Ascorbic acid
- 8) The element not present in the carbohydrate prepared by plant is -----  
a) Hydrogen                      b) Carbon                      c) Oxygen                      d) Potassium
- 9) The acid found in acid rain is -----  
a) Hydrochloric acid                      b) Lactic acid                      c) Carbonic acid                      d) Oxalic acid
- 10) The colour of solution from <sup>ed</sup> when an iron nail is added to Cu SO<sub>4</sub> solution.  
a) Pink                      b) Red                      c) Green                      d) Blue
- 11) The component essential for photosynthesis is -----  
a) CO                      b) CO<sub>2</sub>                      c) O<sub>2</sub>                      d) None

- 12) The Organism which does not need a circulatory system is -----  
 a) Frog                      b) Hydra                      c) Sponges                      d) both b&c
- 13) The scientist who studied the functioning of stomach is -----  
 a) Willam Beaumont      b) Willam Harvey      c) Darwin      d) Benjamin Franklin
- 14) Condensation is a ----- change.  
 a) Chemical change      b) Physical change      c) Both a & b      d) None
- 15) Which of the following is an insectivorous plant is -----  
 a) Legumes                      b) Cactus                      c) Pitcher plant                      d) Lichens

**SECTION -B**

**II Name the following** **1x2 = 2M**

- 16) The blood cell which helps in fighting against disease causing germs.  
 17) Litmus is produced from.

**III Fill in the blanks** **1x2 = 2M**

- 18) ----- are the finger like projection seen in Amoeba which helps in movement.  
 19)  $\text{CuSO}_4 + \text{Fe} \rightarrow \text{FeSO}_4 + \text{Cu}$ .

**IV Rewrite the false statements correctly** **1x2 = 2M**

- 20) Pulmonary vein carries pure blood from heart to the Lungs.  
 21) Autotrophs are the organisms that take nutrients in solution form from dead & decaying matter.

**V Match the following** **1x4 = 4M**

- |                          |             |
|--------------------------|-------------|
| 22) Sulphuric acid       | - Cuscuta   |
| 23) Proteins             | - Ozone     |
| 24) Protect from UV rays | - Acid rain |
| 25) Partial parasite     | - Aminoacid |

**SECTION - C**

**VI Answer the following in One or two sentences** **2x10 = 20M**

- 26) Mention the different types of heterotrophic nutrition in plants. Give example for each.
- 27) Give reason why calamine lotion is applied for ant bite.
- 28) Name the bacterium that lives in the roots of legumes. State its importance.
- 29) Define transpiration. Write its significance.

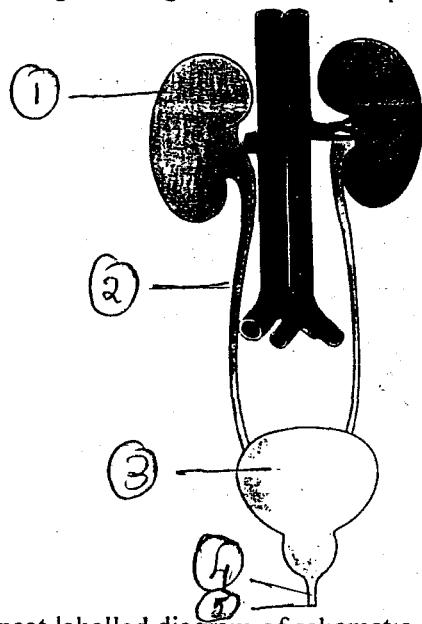
- 30) List down the different types of teeth and state their functions.
- 31) Define chemical reaction. Write any two changes associated with chemical reactions.
- 32) Give reason why cellulose cannot be digested by humans but by ruminants only?
- 33) Explain how leaves other than green colour prepare their food.
- 34) What is blood? What are the components of blood?
- 35) What is Galvanisation? Give one use of it.

**SECTION - D**

**VII Answer the following in 3 or 4 sentences**

**3x10 =30M**

- 36) Identify the given diagram and label its parts.

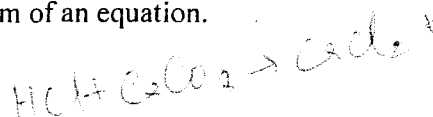


- 37) Draw a neat labelled diagram of schematic representation of photosynthesis.
- 38) What is digestive system? Name the different parts of it.
- 39) What is Neutralisation? Give an example .Represent it in the form of an equation.
- 40) What is tooth decay? How can it be prevented.

**OR**

Name the different process involved in the process of digestion of food. Name the end products of digestion.

- 41) What happens when Mg ribbon burns in air. What is the nature of product formed when it reacts with water. Represent it in the form of an equation.



- 42) Differentiate between autotrophs and heterotrophs.
- 43) What are physical properties? What is a physical change? Give an example.
- 44) What is tissue? Name the vascular tissue present in plants. Write its functions.
- 45) What is the effect of 3 natural indicators on the following  
d) Acetic acid      b) Calcium hydroxide      c) tap water

**SECTION – E**

**VIII Answer the following in Detail**

**5 x 3 = 15M**

- 46) a) What are villi? Write its significance.  
b) Explain the process of digestion in Amoeba.
- 47) a) Describe the method for preparation of china rose indicator.  
b) What are neutral solutions? Give an example.  
c) Name the bases present in soap.

**OR**

- a) Distinguish between acids and bases  
b) Explain why an antacid is used during indigestion.
- 48) a) What is dialysis?  
b) Write any 2 differences between arteries & Veins.  
c) List out the waste produced in our body and Name the organs involved in its removal.

**THE END**

---