

INTERNATIONAL INDIAN SCHOOL – DAMMAM

SUMMATIVE ASSESSMENT – I JUNE 2014 – 15

SUBJECT: GENERAL SCIENCE

TIME: 3 Hours

CLASS: VII

SET – B

MARKS: 90

GENERAL INSTRUCTIONS:

1. Read the questions carefully.
2. All the answers to be written in the answer sheets provided.
3. Total number of questions is 48.

SECTION - A

I. Choose the correct answer from the following options:-

1. The prominent spherical, centrally placed structure inside the cell is _____
a) Nucleolus b) cell membrane c) Nucleus d) Cytoplasm
2. The large cream coloured gland present just below the stomach is the _____
a) Salivary gland b) Liver c) Pancreas d) none of these
3. Calcium oxide is also called as _____
a) Slaked lime b) lime water c) calamine lotion d) Quick lime
4. _____ turns lime water milky.
a) oxygen b) hydrogen c) carbon dioxide d) nitrogen
5. The Pitcher plant shows _____ mode of nutrition.
a) Parasitic b) Saprophytic c) Symbiotic d) Insectivorous
6. The process of removal of faecal matter through the anus is _____
a) Ingestion b) Digestion c) Absorption d) Egestion
7. Which of the following is basic in nature?
a) Curd b) Vinegar c) Soap d) Tamarind
8. Magnesium ribbon combines with oxygen and burns with a _____ colour flame.
a) blue b) green c) yellow d) white
9. The end product of Photosynthesis is _____

- a) Carbohydrate b) sugar c) starch d) glucose

10. Milk of Magnesia is also known as _____

- a) Magnesium oxide (b) Magnesium carbonate (c) Magnesium chloride (d) Magnesium hydroxide

11. The factors essential for Rusting of iron are _____

- a) only oxygen b) only water c) both oxygen & water (d) none of these

12. Spinach contains _____ acid.

- a) Formic acid b) Oxalic acid c) Ascorbic acid d) Acetic acid

13. Digestion of food is a _____ change.

- a) Physical b) Chemical c) both of these d) one of these

14. Which one of the following does not cause acid rain?

- a) Carbon dioxide b) Calcium oxide c) Nitrogen dioxide d) Sulphur dioxide

15. The process of depositing a layer of zinc over iron is called _____

- a) Burning b) Galvanisation c) Crystallisation d) Rusting

SECTION - B

II. Name the following :-

(1X10=10 mks)

16. The green coloured pigment in the leaves-

17. The false feet in the body of Amoeba-

18. The chemical name for Baking soda-

19. The mixture of Chromium, Nickel, Manganese, Carbon and Iron-

III. Fill in the Blanks:-

20. _____ derive their food from the dead and decaying matter.

21. The cellulose is digested in the _____

22. Litmus is extracted from _____

23. _____ absorbs the ultra violet radiation and breaks down to oxygen.

IV. Rewrite the following statements correctly:-

24. In acidic solutions, phenolphthalein gives pink colour.

25. All animals are autotrophic in nutrition.

SECTION – C

(2X10=20 mks)

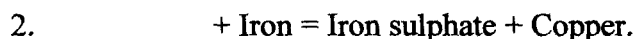
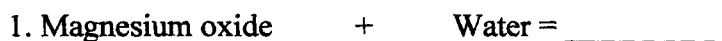
26. What are Ruminants? Give two examples.
27. Where is the process of digestion completed? What are the end products of the process of digestion?
28. Define Neutralization reaction. Represent it in the form of an equation with an example.
29. Define Digestion. List the different types of teeth found in man.
30. Explosion is a Chemical change. Give reason.
31. What happens when a pinch of Baking soda is added to Vinegar? Give the word equation.
32. What is Pseudopodia? Write its function.
33. What happens when Magnesium ribbon is burnt? Explain with the help of an equation.
34. What is Chemical change? Give two examples.
35. What is function of the liver in the process of digestion of food?

SECTION-D

VI. Answer the following in three or four sentences :-

(3x10= 30 mks)

36. a) Complete the following Equations :-



b) Write the name of the Chemical compound:-



37. What is Stomata? What is the function of Stomata?

38. a) What are Indicators ? b) Name any two Natural indicators. c) Name the colourless indicator used in the laboratories.

39. Explain rusting of iron as a chemical change with the help of an equation.

40. State the reaction of Vinegar and Sodium hydroxide with a) litmus b) turmeric c) phenolphthalein

41. Name the secretions of the Stomach. State the functions of each secretion of the Stomach.

42. What are Lichens?

43. How does the application of Calamine lotion subside the burning effect of an ant bite?

44. Write the functions of the tongue.

(OR)

Explain the structure of Amoeba.

45. Describe the structure of the cell with a neat labelled diagram.

SECTION-E

VII. Answer the following in detail:-

(5 x 3 = 15 mks)

46. a) Mention **any two** differences between an acid and a base. (2mks)

b) What is DNA? Write its function. (2mks)

c) A turmeric stain on a white shirt turns to red when washed with soap. Give reason. (1mk)

47. a) What is Diarrhoea? How is it caused? (2mks)

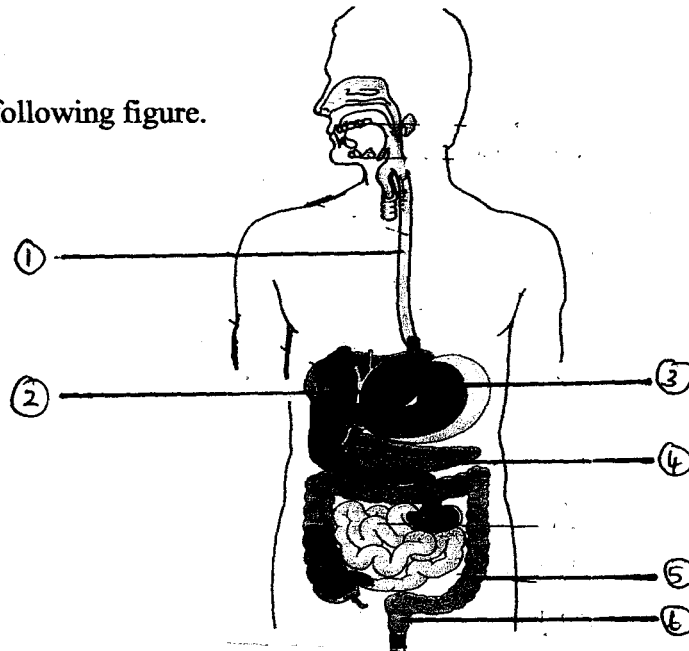
b) Cellulose cannot be digested by humans but can be digested by ruminants. Give reasons. (3)

(OR)

a) What is Digestive System? (1mk)

b) What are Milk teeth? (1mk)

c) Identify the parts marked in following figure. (3mks)



48. a) List down the four different types of heterotrophic nutrition in plants with an example for each. (2mks)

b) Draw a neat labelled diagram representing the process of photosynthesis. (2mks)

c) Name **any two** animal parasites that suck the blood of humans. (1 mk)
