

S 301

INTERNATIONAL INDIAN SCHOOL – DAMMAM

FIRST TERMINAL EXAMINATION – JUNE 2012

CLASS – 12

GEOGRAPHY [THEORY]

Time Allowed : 3 Hours

Maximum Marks : 70

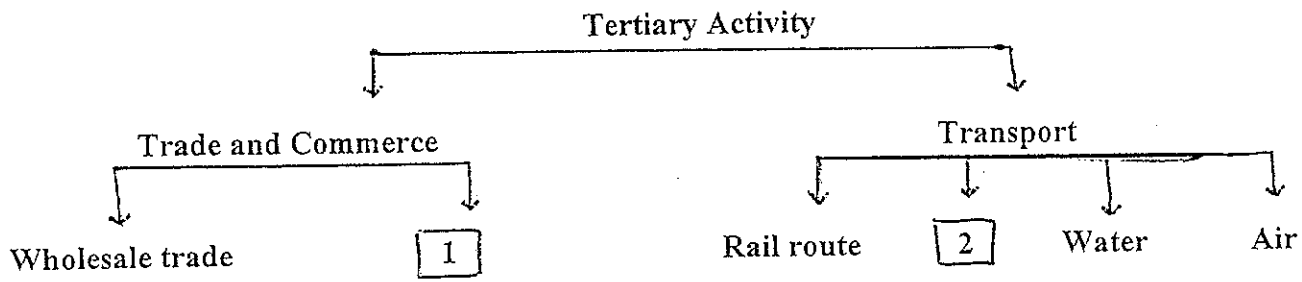
SET – “B”

General Instructions:

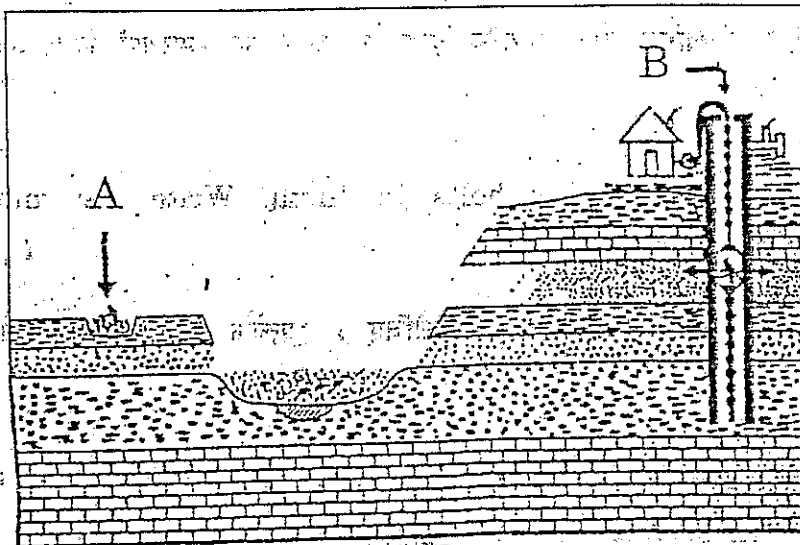
- [i] *There are 26 general questions.*
- [ii] *All questions are compulsory.*
- [iii] *Marks for each question are indicated against it.*
- [iv] *Question numbers 1 to 10 are very short-answer questions carrying 1 mark each. Answer to each of these questions should not exceed 20 words.*
- [v] *Question numbers 11 to 20 are short-answer questions carrying 3 marks each. Answer to each of these questions should not exceed 80 words.*
- [vi] *Question numbers 21 to 25 are long-answer questions of 5 marks each. Answer of each of these questions should not exceed 150 words.*
- [vii] *Question 26 is related to identification of geographical features on map.*
- [viii] *Outline map of the World and provided to you must be attached with your answer-book.*
- [ix] *Use of templates or stencils for drawing outline map is allowed.*

-
- | | |
|---|---|
| 1. Where do T – Shaped settlements develop ? | 1 |
| 2. Name two important raw materials used in making of steel excluding iron ore | 1 |
| 3. Expand the UNDP. | 1 |
| 4. What is a Blue train ? | 1 |
| 5. “ The number of pastoral nomads has been decreasing and their areas operating by them shrinking. ”
Give reason. | 1 |
| 6. Name the capital city of Australia ? | 1 |
| 7. Mention two drawbacks of shifting agriculture ? | 1 |
| 8. Where is the Volga water ways developed ? | 1 |
| 9. Differentiate between the place of origin and the place of destination ? | 1 |
| 10. In which country, is the lowest sex ratio found ? | 1 |

11. Complete the following table by writing in your answer book the name of item No 1 & 2. Describe two features of each. 3

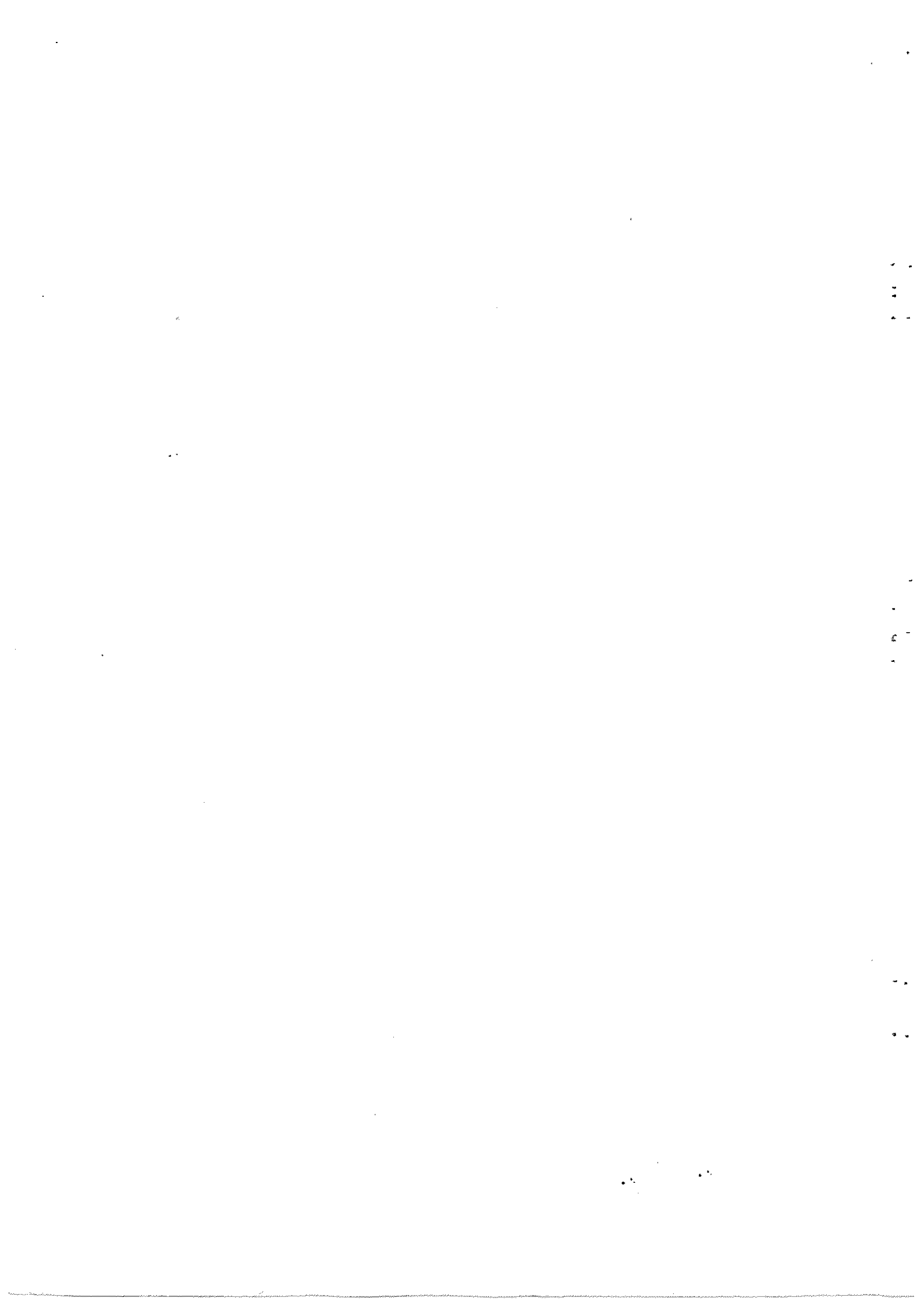


12. Classify the industry on the basis of an ownership? 3
13. Explain any three geographical factors that influence the distribution of population across the world. 3
14. Describe the three stages of Demographic transition theory. 3
15. Define the term human settlement. Explain the type of settlement with reference to Shape and Pattern. 1 + 2 = 3
16. Discuss any three type of tourist attraction across the world. 3
17. What is ageing population? There is a higher proportion of people in higher age group in the developed countries of the world. Give reason. 1+2= 3
18. Study the map given below and answer the following. 3

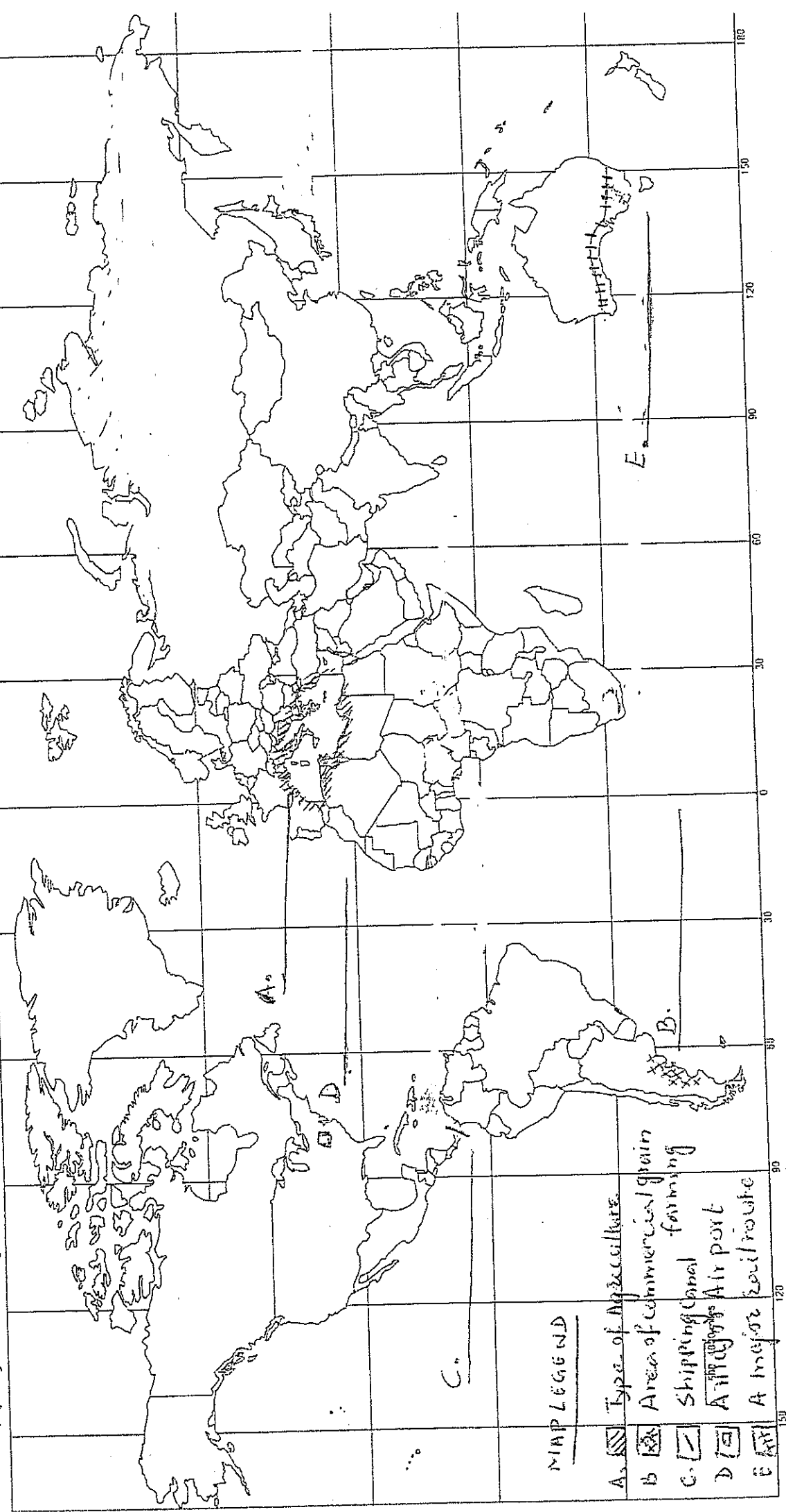


- a) Name the type of mining shown as A & B.
- b) Point out two difference between these type of mining.





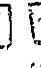
19. How many countries are in the category of ^{Higher level of} human development according to human development report 2005. Give examples and why? 3
20. What is a mixed farming. State three characteristic features of it. 1 + 2 = 3
21. What do you understand by "digital divide." Name the fast emerging countries of medical tourism in the world. 3+2=5
22. Describe any four main features of commercial livestock rearing activity. Name any two important countries where it is practiced. 4+1=5
23. Explain the importance of railways. Describe the main features of Trans-Siberian rail route. 2+3=5
24. Define the Urban settlement as given by the census of India 1991. Classify the town and city on the basis of their function giving three types. 2+3=5
25. What are technopolies? Mention any three characteristic features of traditional large scale industrial region of the world. 2+3=5
26. Five geographical features are shown on an outline political map of the World. Identify with the help of given map legend and write their name on the lines given in the map. 5x1=5
- A) Type of agriculture
 - B) Area of commercial grain farming
 - C) A shipping canal.
 - D) A major airport
 - E) A major rail route.



G-26) SET (B)



MAP LEGEND

- A.  Type of Agriculture.
- B.  Area of commercial grain farming
- C.  Shipping Canal
- D.  Air port
- E.  A major rail route



XII - First Term Exam 2012
LQ4.XII-1stTermExam2012

48343



IIS, Damman - Library 1