

III. Match the following :-

- | | | |
|-----------------------------|-----------|------------|
| a) Electoral Photo ID card. | Mumbai | () |
| b) Travel document. | Documents | () |
| c) Important papers. | Voter ID | () |
| d) Pucca houses. | Passport | () |
| e) Metropolitan city. | Cities | () |

IV. Read and Answer

1. Aadhaar Card is a photo identity proof to every Indian citizen and is issued by Unique Identification Authority of India.

a) Expand UIDAI _____

2. The Voter ID card is an identity document issued by Election Commission of India. It is also called as Electors Photo Identity Card (EPIC) and issued to the adults i.e 18 and above.

a) Who are eligible to vote? _____

b) Expand EPIC _____

3. A Passport is a travel document issued by country's government. It contains person's name, place and date of birth, photograph, signature and other information. It confirms that the person is the citizen of the country.

a) Name the documents that prove one's citizenship. _____

V. Write the correct words from the letters given below: -

1. EDUCONMTS - _____

2. SIOPNEN - _____

L17- ANIMAL KINGDOM

I. Fill in the blanks:

a) There are about _____ animal species living on Earth.

b) All animals deserve a chance to _____.

c) Rats _____ in the homes is a cause for concern.

d) _____ and _____ use their tails to ward off and attack enemies.

e) Animals like cows, buffaloes use their tails to _____.

II. State whether true or false and correct the false statement:

1. Cats and Squirrels use their tails to escape from enemies. ()

2. Blue whale is the largest animal on the earth. ()

3. Omnivores eat both plants and flesh of other animals. ()

4. Horses are an example of Herbivores. ()

5. Animals use their tails for communication, locomotion, grasp and hold. ()

III. Give one word for the following:

1. A device to flutter and kill insects - _____
2. Tamed and kept as pet- _____
3. Threat or danger- _____
4. Food for cattle - _____

IV. Give two examples for each of the following:

- a. Animals which slither. _____, _____
- b. Animals which crawl: _____, _____
- c. Animals that eat both plants and flesh: _____, _____
- d. Animals that use their tails for communication: _____, _____

V. Circle the odd one out:

- e. Elephant, lion, snake, tiger.
- f. Dolphin, shark, housefly, sea horse.
- g. Spider, scorpion, butterfly, snake.
- h. Horse, cow, tiger, goat

VI. Write the correct words from the letters given below: -

1. CENMAE - _____
2. OCLOTNIOMO - _____

VII. Read and Answer:

Animals use their tails to express emotions, to balance their body, defense, grasping, navigation and for locomotion. Monkeys use their tails to hold and grasp things and to swing from the branches. Fish and other sea animals use their tails for locomotion. Cats and squirrels use their tails for balance while moving at high speed.

Q1. Animals use their tails for:

- a. defense b. locomotion c. balance d. All

Q2. Monkeys use their tails for:

- a. navigation b. express emotions c. hold and grasp things d. defense

Q3. While moving at high speed cats and squirrels use their

- a. legs b. tails c. Both legs and tails d. None of the above.

L18- WEATHER AND SEASONS

I. Fill in the blanks:

1. Change in season is caused due to the _____ .
2. Places near the _____ get more heat from the sun than the places at the poles.
3. _____ time is the hottest time of the day.
4. _____ is the coldest season of the year.
5. Earth moves around the sun in a different path called _____ .
6. The changes in _____ are determined by wind, temperature, rain, sun and clouds.
7. Excessive rain during the monsoon season causes natural disaster called _____ .
8. Sarees, salwar-kameez and ghagra-choli are worn by _____.
9. The uneven heating and cooling of different parts of Earth causes _____.
10. Dirt mixed with wind can make dust storms called _____.

II. Define:

1. Weather: _____.
2. Revolution: _____.
3. Wind: _____.

III. Give one word for the following:

1. A season which relieves the people from intense heat and dryness. _____
2. The season we celebrate festivals like Dussehra and Diwali. _____
3. Farmers are happy as the crops are ripe for harvesting in this season. _____
4. Electric heaters are used and woollen clothes are worn in this season. _____

IV. State whether true or false, correct the false statement.

1. Spring season is also known as 'Fall'. ()
-

2. Warm air can hold less moisture.()

3. People in Himachal Pradesh, wear light coloured cotton clothes due to low temperature.()

4. We wear different clothes according to the weather ()

5. The length of days and nights are equal in winter season.()

V. MATCH THE FOLLOWING:

- | | |
|----------------------------|----------------|
| 1. Golden season | Winter () |
| 2. Dry and windy weather | Summer () |
| 3. Cool and cloudy weather | Autumn () |
| 4. cold drinks | Spring () |
| 5. Rewari | Monsoon () |

VI. READ AND ANSWER

In winter, people like to stay indoors, when the cold wind blows and enjoy drinking hot soup, milk, tea and coffee. Some animals like to go on their long winter sleep. This is called hibernation.

1. People like to drink in cold season
- | | | | |
|----------------|---------------|-------------|---------------|
| a. cool drinks | b. ice creams | c. hot soup | d. watermelon |
|----------------|---------------|-------------|---------------|
2. Animals have long periods of deep sleep in winter called
- | | | | |
|-----------------|----------------|---------------|---------------|
| a. condensation | b. hibernation | c. locomotion | d. navigation |
|-----------------|----------------|---------------|---------------|

L19- AIR AND WATER

I. Choose the correct answer:

1. _____ can make people deaf.
- | | | |
|------------------|--------------------|--------------------|
| a) Air pollution | b) Noise Pollution | c) Water pollution |
|------------------|--------------------|--------------------|
2. _____ is the process of conversion of water into water vapour due to heating.
- | | | |
|----------------|----------------|-----------------|
| a) Water Cycle | b) Evaporation | c) Condensation |
|----------------|----------------|-----------------|
3. Plants require _____ for growth.
- | | | |
|-----------|-------------|-----------|
| a) Oxygen | b) Nitrogen | c) Helium |
|-----------|-------------|-----------|
4. The tiny droplets with dust particles in the air join together to form _____.
- | | | |
|---------|---------|-----------|
| a) Rain | b) Snow | c) Clouds |
|---------|---------|-----------|
5. Aerated drinks contain _____.
- | | | |
|-----------|-------------------|-------------|
| a) Oxygen | b) Carbon dioxide | c) Nitrogen |
|-----------|-------------------|-------------|
6. _____ is a universal solvent.
- | | | |
|-----------|-------------|----------|
| a) Oxygen | b) Nitrogen | c) Water |
|-----------|-------------|----------|

II. Name the following:

- a) Any two insoluble substances. _____, _____
- b) Any two ways to keep the air clean. _____, _____
- c) Any two gases that are present in the air. _____, _____
- d) Two forms in which water exists. _____, _____
- e) Two causes of water pollution. _____, _____

III. Write true (T) or false (F). if false, correct the statement:

- 1. In cities, water is supplied through hand pumps ()

- 2. Salt, sugar, soap and milk powder do not mix in water. ()

- 3. Typhoid and Cholera are water-borne diseases. ()

- 4. We should not lay water pipes and drainage pipes side by side. ()

- 5. Carbon dioxide is given out during transpiration. ()

IV. Fill in the blanks:

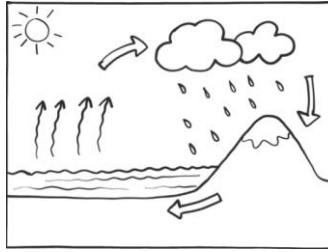
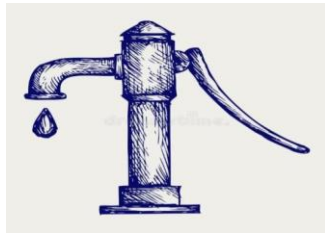
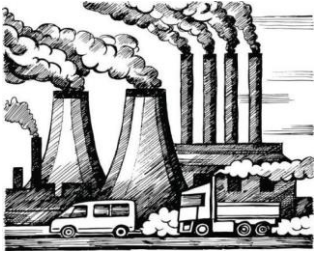
- 1. _____ gas absorbs heat.
- 2. _____ and _____ are the major cause of air pollution.
- 3. Wet clothes dry in the sun due to _____ .
- 4. Some rainwater seeps into the ground, forming the _____ .
- 5. Water is colourless, tasteless and _____ liquid.

V. Read and Answer:

Carbon dioxide given out during respiration has a tendency to capture heat from the atmosphere. Plants take up this gas during photosynthesis, keeping the air cool and fresh. Carbon dioxide absorbs the heat emitted from the Earth's surface. It is called a greenhouse gas. Other examples of greenhouse gases are water vapour and methane. Pollution increases the amount of greenhouse gases, which causes an increase in the temperature of the atmosphere.

- A) Greenhouse gases increase due to
a) Condensation b) Evaporation c) Pollution d) Photosynthesis
- B) Which one of these gases is given out during respiration?
a) Oxygen b) Carbon dioxide c) Nitrogen d) Methane
- C) Which process helps in keeping the air fresh?
a) Respiration b) Pollution c) Smoke emitted from factories d) Photosynthesis
- D) Tick the greenhouse gases
a) Carbon dioxide () b) Oxygen() c) Methane () d) Nitrogen ()

VI. Identify the following:



L-20 UNIVERSAL BODIES

I. Underline the correct options

1. The Earth is _____ in shape.
a) Spherical b) Circular c) Cylindrical
2. It is the smallest planet.
a) Earth b) Jupiter c) Mercury
3. There is no life on the Moon because of absence of
a) Air b) Water c) Both
4. Orion, Great Bear, Hunter are some
a) Planets b) Constellations c) Stars
5. The light from the Sun reaches our Earth in
a) 16 minutes b) 8 minutes c) 24 minutes

II. Give one word for the following.

1. Egyptian name of 'Sun God' _____
2. The envelope of gases that surround the Earth _____
3. The moon where large part of it is seen _____
4. The natural satellite of planet Earth is _____
5. A celestial body orbiting Earth or other planets _____

III. Fill in the blanks:

1. A group of stars forming various patterns is called _____.
2. The big holes on the surface of moon are called _____.
3. _____ is the third nearest planet to the Sun.
4. The changing shapes of the Moon are called its _____.
5. When the moon comes between Earth and the Sun, it is called _____.

IV. Name the planets of Solar System.

- 1)_____ 2)_____ 3)_____ 4)_____
- 5)_____ 6)_____ 7)_____ 8)_____

V. State whether true or false and correct the false statement:

1. Rotation of Earth around the Sun causes change in seasons. ()

2. Earth is also called the Blue planet. ()

3. Earth is in the centre of the Solar system. ()

4. Sun rises in west and sets in east. ()

5. The Moon appears to change its shape every night. ()

VI. Read and Answer

The movement of Earth around the Sun in a fixed path is called revolution. This movement (one revolution) takes 365 days and 6 hours. The revolution of Earth around the Sun cause change in seasons.

1. What is movement of Earth around Sun in a fixed path called?

- a. Rotation b. Revolution c. Phases

2. How long does revolution occur in?

- a. One year b. One month c. One day

3. The revolution of earth around Sun causes change in

- a. Day b. Night c. Seasons

VII . Identify the pictures

