

**INTERNATIONAL INDIAN SCHOOL, DAMMAM**  
**UPPER PRIMARY SECTIONS**  
**ANNUAL EXAM - REVISION WORKSHEET (2023-24)**

**CLASS: IV**

**SUBJECT – EVS**

**NAME-** \_\_\_\_\_ **SECTION -** \_\_\_\_\_ **ROLL NO -** \_\_\_\_\_

---

**LESSON – 1 PARTS OF OUR BODY**

**A. Put a tick (✓) on the correct option**

1. It is an external organ of the body.

- (a) Stomach                      (b) Eyes                      (c) Kidney

2. Human heart has \_\_\_\_\_ chambers.

- (a) 4                      (b) 3                      (c) 2

3. The \_\_\_\_\_ appear blue in colour and have thin walls.

- (a) Capillaries                      (b) Veins                      (c) Arteries

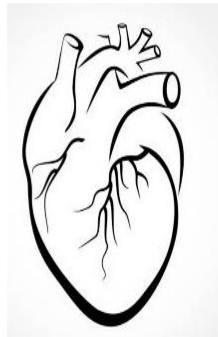
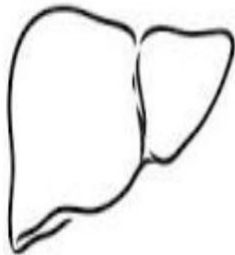
4. They are bean shaped organs

- (a) Lungs                      (b) Kidneys                      (c) Heart

5. Human brain has a capacity to store \_\_\_\_\_ times as much information as Wikipedia.

- (a) two                      (b) five                      (c) ten

**B. Name the organs.**



**C. Choose the correct answer:**

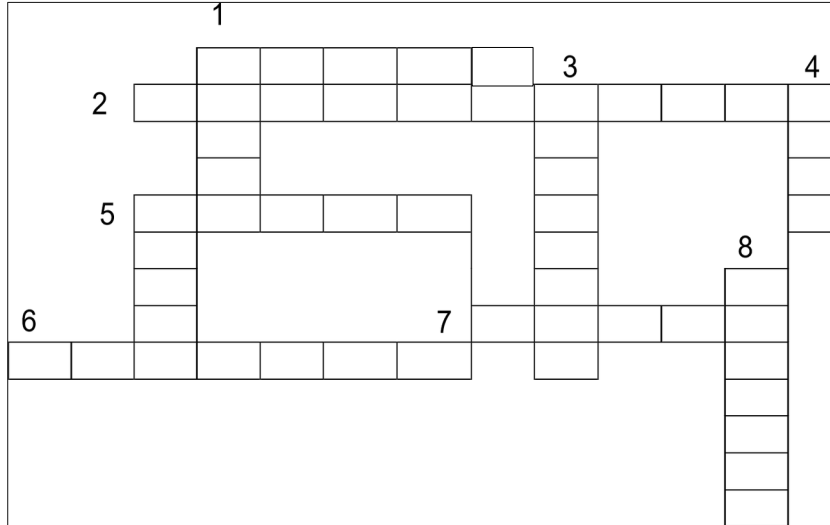
- (a) If both Assertion (A) and Reason (R) are true and R is correct explanation of A.  
(b) If both A & R are true but R is not the correct explanation of A  
(c) A is true but R is false  
(d) A is false and R is true

1. **Assertion (A):** The Doctor tell us not to have any junk food.  
**Reason (R):** Junk food is harmful for our body.  
2. **Assertion (A):** Liver is important for blood clotting.  
**Reason (R):** A Liver is reddish brown organ.

**D. Complete the crossword given below:**

- Down**
1. Largest gland of body- \_\_\_\_\_
  3. Blood vessels carrying oxygen rich blood- \_\_\_\_\_
  4. Organ used for smelling - \_\_\_\_\_
  5. We donate \_\_\_\_\_ to save someone's life
  8. Pear shaped organ is \_\_\_\_\_

- Across**
1. Primary organ for respiration- \_\_\_\_\_
  2. Process of blood flow - \_\_\_\_\_
  5. \_\_\_\_\_ control all body functions.
  6. Bean shaped organ- \_\_\_\_\_
  7. \_\_\_\_\_ pumps blood in our body.



**Lesson 5 – Clothes We Wear**

**I. Fill in the blanks**

1. \_\_\_\_\_ are weaved or knitted together to form fabrics.
2. In spinning, raw fibre strands are twisted in machine to form \_\_\_\_\_.
3. \_\_\_\_\_ cotton is not only soft and comfortable to wear but also good for environment.
4. Gandhiji used \_\_\_\_\_ to spin cotton cloth (khadi).
5. In \_\_\_\_\_ we wear light colored cotton clothes.
6. Fibres that are made by man using chemicals are called \_\_\_\_\_ or \_\_\_\_\_ fibres.

**II. Choose the correct answer**

1. We wear thick woollen clothes to keep our body warm in \_\_\_\_\_ season.  
a) Humid                      b) Summer                      c) Winter
2. It is a natural fibre.  
a) Nylon                      b) Polyester                      c) Linen
3. It is the process of colouring the fabric.  
a) Dyeing                      b) Knitting                      c) Weaving
4. Ghaghra with Katchli are worn in the state of \_\_\_\_\_.  
a) Rajasthan                      b) Kerala                      c) Jammu and Kashmir
5. Various designs and patterns are formed on the fabric using \_\_\_\_\_.  
a) Screens                      b) Blocks                      c) Both a and b
6. We should wash woollen clothes with \_\_\_\_\_ detergents made especially for woollen clothes.  
a) strong                      b) liquid                      c) solid
7. Handkerchiefs are usually made up of \_\_\_\_\_ fibres as they absorb and dry up easily.  
a) cotton                      b) woollen                      c) polyester

**III. State whether 'True' or 'False' and correct the false statement**

1. Naphthalene balls and neem leaves provide protection to the woollen and silk clothes from pests and insects. \_\_\_\_\_
2. Men in Gujarat wear phiran and salwar. \_\_\_\_\_
3. A handloom is used to weave cloth manually without using electric power. \_\_\_\_\_
4. During summer season gumboots and raincoats are worn. \_\_\_\_\_
5. We get cotton and linen from plants. \_\_\_\_\_

**IV. Match the following**

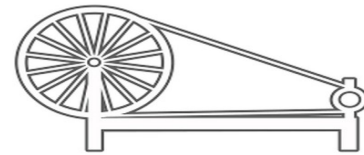
- |                  |                      |
|------------------|----------------------|
| 1. Lehnga-choli  | a. Uniform           |
| 2. Phiran-salwar | b. Gujarat           |
| 3. Angarakha     | c. Blocks            |
| 4. School        | d. Rajasthan         |
| 5. Printing      | e. Jammu and Kashmir |

**V. Identify these pictures**

1.



2.



3.



4.



**VI. Choose the correct option**

- a. Both Assertion (A) and Reason (R) are correct and Reason (R) is the correct explanation of Assertion (A).
- b. Both Assertion (A) and Reason (R) are correct and Reason (R) is NOT the correct explanation of Assertion (A).
- c. Assertion (A) is true, but Reason (R) is false.
- d. Assertion (A) is false, but Reason (R) is true.
  1. **Assertion (A):** Gandhiji used charkha to revive Indian textile industry.  
**Reason (R):** Charkha is a hand-operated machine to weave thread.
  2. **Assertion (A):** Woollen and silk clothes should either be washed with a mild detergent or should be given for dry cleaning.  
**Reason (R):** Woollen and silk clothes are protected from pests by keeping neem leaves or naphthalene balls with them.

## L-7 Services in the community

### **I. Fill in the blanks.**

1. Any adult of age \_\_\_\_\_ years and above can stand for election.
2. Services that are provided to the people by the government are called \_\_\_\_\_ services.
3. In small cities and towns, the development and welfare of people is looked after by \_\_\_\_\_.
4. Any villager who is \_\_\_\_\_ years or above in age can vote to elect the members of Gram Panchayat.
5. \_\_\_\_\_ are the main source of income for the government for providing public services.

### **II. Choose the correct answer.**

1. In Villages Public services are provided by \_\_\_\_\_.  
(a) Municipal Corporation (b) Gram Panchayat (c) both a and b
2. A Gram Panchayat is elected for a period of \_\_\_\_\_ years.  
(a) 5 (b) 3 (c) 10
3. Which of the following is the function of Municipal corporation?  
(a) issuing birth certificates (b) Arranging birthday party (c) celebrating festivals
4. A Village with a population of \_\_\_\_\_ or more has a Gram Panchayat.  
(a) 300 (b) 450 (c) 500
5. In big cities the \_\_\_\_\_ looks after the welfare and Development work.  
(a) Municipal Committee (b) Municipal Corporation (c) Gram Panchayat

### **III. Name the following:**

1. Head of the Gram Panchayat. \_\_\_\_\_
2. Something given to charity. \_\_\_\_\_
3. Head of the Municipal Corporation. \_\_\_\_\_
4. Elected members of a Gram Panchayat. \_\_\_\_\_
5. Members of the Municipal Corporation. \_\_\_\_\_

### **IV. State whether true or false.**

1. Municipal Corporation issues birth and death certificates - \_\_\_\_\_
2. Sarpanch is the head of Gram Panchayat - \_\_\_\_\_  
\_\_\_\_\_
3. Keeping the road clean in a big city is the function of Municipal committee - \_\_\_\_\_  
\_\_\_\_\_
4. Gram Panchayat is elected for 9 years - \_\_\_\_\_  
\_\_\_\_\_
5. Any villagers who is 18 years or above in age can vote to elect the members of the Gram Panchayat - \_\_\_\_\_  
\_\_\_\_\_

## L - 19 World of Animals

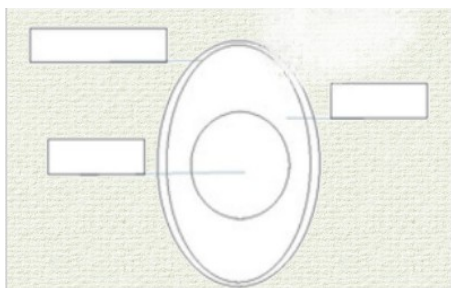
### **I) Fill in the blanks.**

- 1) Animals that spent most of their time on trees are called \_\_\_\_\_.
- 2) Animals that are found on land are called \_\_\_\_\_.
- 3) \_\_\_\_\_ is the largest living mammal on land.
- 4) A young cockroach that develops from the egg is called \_\_\_\_\_.
- 5) \_\_\_\_\_ is the fastest running insect in the world.

**II) Name the following.**

- 1) Process of giving birth to offspring of their own kind: \_\_\_\_\_
- 2) The male or female parent animal sits on the eggs for a few weeks to keep it warm: \_\_\_\_\_
- 3) The breaking of the egg, to let the baby come out: \_\_\_\_\_
- 4) The development of an animal from the embryo to an adult: \_\_\_\_\_
- 5) An unborn offspring: \_\_\_\_\_

**III) Label the parts of egg:**



**IV) Give any 2 examples for the following.**

- 1) Arboreal animals: \_\_\_\_\_, \_\_\_\_\_
- 2) Scavengers: \_\_\_\_\_, \_\_\_\_\_
- 3) Terrestrial animals: \_\_\_\_\_, \_\_\_\_\_
- 4) Aerial Animals: \_\_\_\_\_, \_\_\_\_\_
- 5) Amphibians: \_\_\_\_\_, \_\_\_\_\_

**V) Choose the correct answer.**

- a) Both Assertion (A) and Reason (R) are correct and the Reason (R) is the correct explanation of Assertion (A).
  - b) Both Assertion (A) and Reason (R) are correct and but Reason (R) is NOT the correct explanation of Assertion (A).
  - c) Assertion (A) is true, but Reason (R) is false.
  - d) Assertion (A) is false, but Reason (R) is true.
1. Assertion (A): The lifecycle of butterfly shows metamorphosis.  
Reason (R): Adult butterflies have taste buds on their feet.

**VI) Match the following:**

- |             |           |
|-------------|-----------|
| 1) elephant | a) piglet |
| 2) lion     | b) kitten |
| 3) pig      | c) cub    |
| 4) cat      | d) lamb   |
| 5) sheep    | e) calf   |

**VII) Circle the odd one out:**

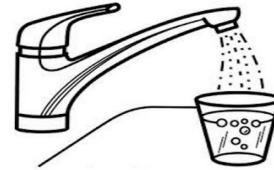
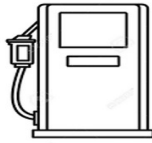
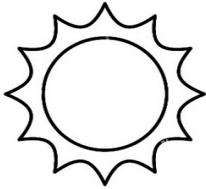
- 1) tiger, lion, rabbit, leopard
- 2) sparrow, hen, parrot, pigeon
- 3) frog, crocodile, snake, cat
- 4) yolk, albumen, larva, embryo

## L-24 Gifts of Nature

### I. Put a tick on the correct option.

1. It is a natural resource  
a) Trees    b) bridges    c) buildings
2. It is not a renewable resource  
a) Wind    b) sunlight    c) fossil fuels
3. Part of the earth covered with water  
a) three-fourth    b) one-half    c) one-fourth
4. It is a cause of water pollution  
a) cooking food    b) growing trees    c) industrialization
5. \_\_\_\_\_ is the main source of freshwater on Earth.  
a) Ice caps    b) Rain    c) Tubewells

### II. Mark these resources as R for renewable and NR for non renewable



### III. Give one word for the following.

1. Extraction of non-renewable resources by digging deep into the earth \_\_\_\_\_
2. Fuels formed from dead remains of plants and animals \_\_\_\_\_
3. Resources available in limited quantity \_\_\_\_\_
4. Removal of top layer of soil by natural agents \_\_\_\_\_
5. Exhausting or reducing in amount \_\_\_\_\_

### IV. Match the following:

- |              |                   |
|--------------|-------------------|
| 1. Handpumps | refill or restock |
| 2. Saline    | wood pulp         |
| 3. Metals    | underground water |
| 4. Replenish | salty             |
| 5. Paper     | Iron and copper   |

### V) Choose the correct option:

- a) Both Assertion (A) and Reason (R) are correct and Reason (R) is the correct explanation of assertion (A)
- b) Both Assertion (A) and Reason (R) are correct but Reason (R) is not the correct explanation of Assertion (A)
- c) Assertion (A) is true but Reason (R) is false
- d) Assertion (A) is false but Reason (R) is true

**1. Assertion (A):** Soil is a vital part of the natural environment and must be conserved.

**Reason (R):** Soil takes many years to form.