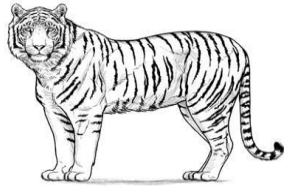




Movement: \_\_\_\_\_  
 Breathing: \_\_\_\_\_  
 Feeding: \_\_\_\_\_



Movement: \_\_\_\_\_  
 Breathing: \_\_\_\_\_  
 Feeding: \_\_\_\_\_

**VI. Classify the following animals in the correct column**

Goat, Lion, Elephant, Parrot, Eagle, Crow, Man, Frog, Bear, Cow, Cat

Carnivore	Herbivore	Omnivore

**VII. In the questions given below, there are two statements marked as Assertion (A) and Reason (R). Read the statements and choose the correct option**

- Both Assertion (A) and Reason (R) are correct and Reason (R) is the correct explanation of Assertion (A).
  - Both Assertion (A) and Reason (R) are correct and Reason (R) is NOT the correct explanation of Assertion (A).
  - Assertion (A) is true, but Reason (R) is false.
  - Assertion (A) is false, but Reason (R) is true.
- Assertion (A):** The feet of frogs and ducks are webbed.  
**Reason (R):** Webbed feet help them to grab things tightly.
  - Assertion (A):** Herbivores have sharp canines and incisors.  
**Reason (R):** Herbivores have to cut and grind their foods properly before swallowing.

**L-4 Human Nervous System**

**I) Fill in the blanks**

- The \_\_\_\_\_ system controls all other systems of our body.
- The brain needs lots of \_\_\_\_\_ and \_\_\_\_\_.
- We should apply \_\_\_\_\_ cream to avoid infection.
- The \_\_\_\_\_ part of the brain helps to control our voluntary movements.
- The brain is surrounded by \_\_\_\_\_ filled with fluid
- The automatic actions controlled by the spinal cord is called \_\_\_\_\_.

**II) Choose the correct answer**

- \_\_\_\_\_ nerves carry orders from the brain or the spinal cord to the muscles and glands.  
a) sensory            b) motor            c) mixed
- The \_\_\_\_\_ is the control centre of our body  
a) heart            b) lungs            c) brain
- The largest part of the brain is called \_\_\_\_\_.  
a) spinal cord    b) cerebrum    c) cerebellum
- The nerves are made up of \_\_\_\_\_.  
a) cornea            b) retina            c) neurons
- The brain stem connects the brain to the \_\_\_\_\_.  
a) cerebrum        b) medulla        c) spinal cord

**III) State whether true or false**

- Nerves carry messages from the body organs to the brains. \_\_\_\_\_
- Eyeballs are protected by eyelids. \_\_\_\_\_
- Ears should be protected from loud noises. \_\_\_\_\_
- The cerebellum is situated beneath the cerebrum. \_\_\_\_\_
- Do not read while standing. \_\_\_\_\_

**IV) Give reason**

- We should not rub our eyes.

---

---

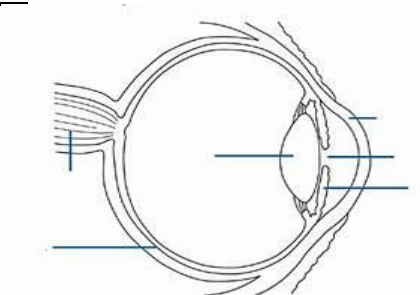
**V) Choose the correct option**

**Assertion (A)** – Skin is the sensory organ for touch and is also the largest sense organ.

**Reason (R)** – Our sense of touch is associated with a general sensation of contact, pressure, heat, cold, and pain.

- Both Assertion and Reason are correct and Reason is the correct explanation for Assertion
- Both Assertion and Reason are correct but Reason is not the correct explanation for Assertion
- Assertion is correct but Reason is incorrect.
- Both Assertion and Reason are incorrect

**VI) Label the diagram given below**



## L-10 Force, Energy and Simple Machine

### I. Fill in the blanks

- \_\_\_\_\_ is ability to do work.
- \_\_\_\_\_ is a wheel with a groove in its circular edge.
- A \_\_\_\_\_ pulley is used to draw water from wells and raise or lower flags.
- A \_\_\_\_\_ is a flat surface with one end higher than the other.
- A \_\_\_\_\_ is used for lifting up the side of a car or a bus while replacing its wheel.
- The upward force acting on an object in a liquid is called \_\_\_\_\_.
- Object that float, displace \_\_\_\_\_ equal to their own weight.
- The weight of an object in water is called \_\_\_\_\_.

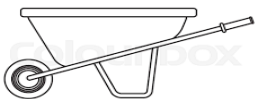
### II. Choose the correct answer.

- The force we apply on any object is called \_\_\_\_\_.  
(a) load                      (b) effort                      (c) fulcrum
- A \_\_\_\_\_ is an inclined plane wrapped round a cylinder.  
(a) screw                      (b) nail                      (c) nut-cracker
- The weight of an object in air is called \_\_\_\_\_.  
(a) Apparent weight                      (b) actual weight                      (c) fixed weight
- If we place two inclined planes together, back to back we get a \_\_\_\_\_.  
(a) Pulley                      (b) inclined plane                      (c) wedge
- The fixed rod that passes through the centre of the pulley is called \_\_\_\_\_.  
(a) axle                      (b) screw                      (c) Both (a) and (b)

### III. Match the following

- |   |   |                     |
|---|---|---------------------|
| 1. We push or pull objects                      | - | Magnetic force      |
| 2. Action between two objects                   | - | Electrical force    |
| 3. A magnet pushes or pulls other magnet        | - | Gravitational force |
| 4. Attracts objects towards centre of the earth | - | Muscular force      |
| 5. Charged when rubbed with other materials     | - | Frictional force    |

### IV. State the kind of lever in the following.



- a. \_\_\_\_\_ b. \_\_\_\_\_ c. \_\_\_\_\_ d. \_\_\_\_\_

### V. Read the statements and choose the correct option

- Both Assertion(A) and Reason (R) are correct and Reason (R) is the correct explanation of Assertion (A).
  - Both Assertion(A) and Reason (R) are correct but Reason(R) is not the correct explanation of Assertion (A).
  - Assertion(A) is true, but Reason (R) is false.
  - Assertion(A) is false, but Reason (R) is true.
- Assertion(A)** : A bottle opener is an example of class three lever.  
**Reason (R)** : In bottle opener the load is found in between the fulcrum and effort.
  - Assertion(A)** : If we place two inclined plane together, back to back, we get a wedge.  
**Reason (R)** : Pulley is an inclined plane wrapped round a cylinder.